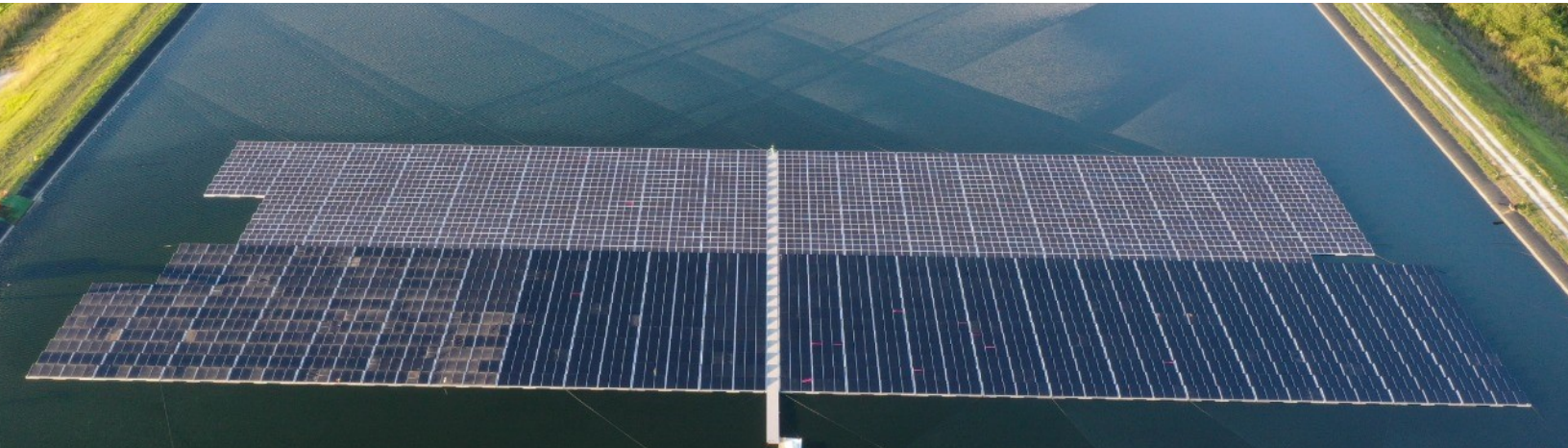




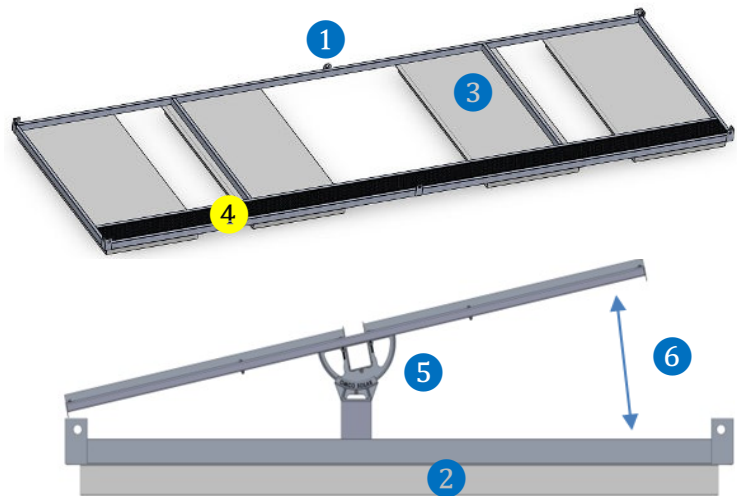
## Data Sheet



Our floating solar system is engineered to offer a robust, efficient, and scalable solution for minimizing footprint while maximizing energy yield on bodies of water as an alternative renewable energy source. Utilizing high-density polyethylene (HDPE) plastic for floatation, encapsulated expanded polystyrene (EPS) foam for buoyancy, and aluminum frames for structural integrity, our system ensures long-lasting performance and flexibility for small or large-scale installations. Our proven float manufacturing process comes from over 20 years of experience and over 7,000 floating dock projects through our sister company, AccuDock.

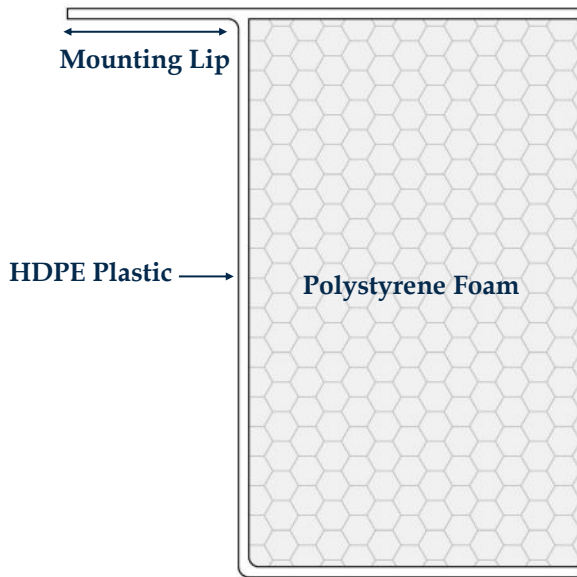
### Key Details

- ① Large 32' x 10' Fully-Welded Aluminum Sections provide the most stable system on the market
- ② 5' x 10' Foam-Filled Floats will NEVER Sink
- ③ White HDPE Floats for reflected Bifacial Gains
- ④ 1.5' Access Walkway ease of installation and O&M
- ⑤ Fixed, Single-Axis Seasonal Tracking, Daily Tracking options available
- ⑥ Can be built with any tilt angle to optimize yield



	Material	Approx. Weight
Structural Base Frame (1)	Aluminum Alloy 6000 Series	310 lbs
Floatation Units (4)	HDPE / Polystyrene Foam	70 lbs per (280 tot.)
Connections (Varies)	EPDM Rubber and 316 SS Bolts	2 lbs
Racking/Modules	Industry Standard Suppliers	Varies

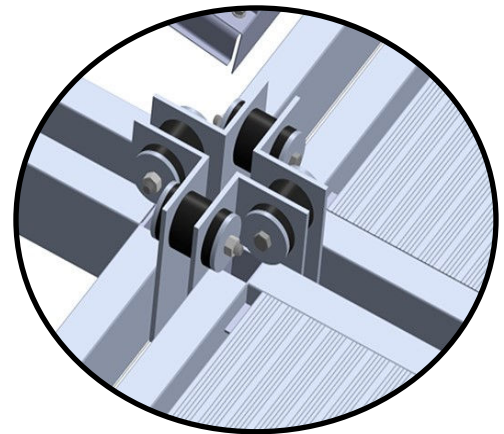
## Floatation Unit Cross-Section



- Manufacturing process allows for unlimited live load/snow ratings available. Buoyancy calculations included with every project.
- 1# Density Expanded Polystyrene full block in each float. Maintains structural integrity for float to sit on dry land.
- Due to closed-cell EPS, floats can be punctured without requirement to replace
- 25 year warranty
- USA Manufactured with 100% USA raw materials
- PFAS and Micro-Plastic Free

## Connections

- 1/2" X 4 -1/2" 316 SS through-bolts at each connection
- Rubber Bushings allow 3-degrees of articulation enabling independent flexibility – movement handles small waves
- Stronger connection points allow for versatile anchoring solutions
- Less connections than competitors – Reduces installation time and expenses



- Compatible with ANY module and racking design
- Floatation Base and walkway creates a stable platform for clean cable management, combiner boxes, drives, etc.
- OSHA Approved Access Gangway on all Arrays
- Elevated modules with an open-air back side create industry leading temperature coefficient gains
- Full anchoring engineering through 3<sup>rd</sup> party trusted suppliers

**FOR MORE INFORMATION CALL 754-714-2302 OR  
EMAIL [INFO@ACCUSOLAR.COM](mailto:INFO@ACCUSOLAR.COM)  
[WWW.ACCUSOLAR.COM](http://WWW.ACCUSOLAR.COM)**